

PRODUCT BROCHURE
WATERPROOFING & GEOTECH SOLUTIONS



More than 40 years of experience

The origin of SPETEC® goes back more than 40 years ago when the chemical injection technology was still in full development. Since our foundation, we have developed a large number of synthetic resin systems for a variety of industrial applications. SPETEC® products are mainly used for waterproofing underground structures such as tunnels, metro stations, dams and basements and for conditioning the subsurface, soil reinforcement, coagulation, slab lifting and chemical containment.

THE RIGHT PRODUCTS, THE RIGHT APPROACH AND THE RIGHT PEOPLE

SPETEC® does more than just provide top products. Through knowledge and innovative techniques have given SPETEC® a strong reputation. Supported by a professional team of engineers and specialists, SPETEC® has consistently strengthened its position in the world. Geographically, SPETEC® grew from a local producer into an international player with project realisations spread across all continents and as a result our systems are still used worldwide today.

RESEARCH & DEVELOPMENT, THE FOUNDATION FOR OUR SUCCESS

As one of the pioneers in the industry, SPETEC® continuously developed and improved its resins over the last 4 decades. Originally the resins were based the 1-component polyurethane technology. Later, 2-component polyurethane resins were added to the range. A series of acrylic resins has recently been developed to complete the SPETEC® range. Of course you can also get the accompanying material to apply these top products. We thoroughly test our newly developed products in specific site conditions. And we continue to innovate. Our R&D department is constantly developing new products and we are constantly improving our existing systems.

PREMIUM QUALITY

At SPETEC® we only use high-quality raw materials. And of course we keep an eye on the global cost, also for the application of our products. At SPETEC® you will find a wide range of highly efficient systems for affordable prices.

PROFESSIONAL ADVICE

SPETEC® not only strives to deliver high-quality products for the construction industry, but to work out complete solutions for our customers' problems. Are you looking for the right professionals to carry out your project? We are also happy to help you with that.

HEALTH, SAFETY & ENVIRONMENT

SPETEC® is all the more committed to developing and marketing environmentally friendly, sustainable products and system solutions. Recycling, processing used packaging, producing more with less and promoting the working comfort of our customers are objectives that we pursue relentlessly and on which we base our sustainable development policy. Our intentions and systems in terms of environmental management are laid down in the ISO 14001 certification. We also work in accordance with the European REACH Regulation for the production and trade of chemicals.

YOUR GUARANTEE

Our entire production process – from development to delivery – is strictly monitored in accordance with ISO 9001 standards. Fast delivery times are essential too. Our production unit in Wommelgem is able to process priority orders rapidly without delaying planned deliveries.



FM 78518



EMS 716699





A worldwide standard

In this leaflet you will find the following:

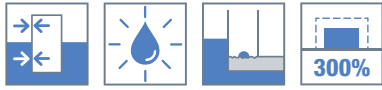
- | | |
|-------------------------------|-------|
| 1. Preventative waterproofing | 4-7 |
| 2. Remedial waterproofing | 8-13 |
| 3. Geotech Solutions | 14-18 |
| 4. Equipment & Accessories | 19-21 |
| 5. Legend icons | 22 |



PREVENTATIVE WATERPROOFING

SPETEC® BST300

HYDROPHILIC BENTONITE STRIP FOR WATERPROOFING OF CONSTRUCTION JOINTS IN CONCRETE



DESCRIPTION

SPETEC® BST300 is a black hydrophilic strip 25 x 20 mm made of sodium bentonite and rubber with special fillers and crystalline admixture. SPETEC® BST300 is placed where the joint will arise. The sealing of the joint is realized by crystallization of additives in, and the swelling of the strip. In contact with water and in confined conditions, SPETEC® BST300 will swell and stop the water infiltration.

BENEFITS

- Ecologically friendly
- Can withstand pressures up to 7 bars
- Permanently active system "wet/dry cycles"
- Easy to install, no special tools required
- Swells more than 300% when in contact with water

FIELD OF APPLICATION

SPETEC® BST300 is used in:

- Construction joints in concrete
- Cold joints
- Pipe penetrations through concrete
- Joints between pre-casted concrete elements like water tanks and manholes
- Joints between floor slabs/walls and secant pile walls/slurry walls/ sheet piles

SPETEC® BSTF

METAL WIRE MESH FOR THE FIXATION OF SPETEC® BST300 IN CONCRETE



DESCRIPTION

SPETEC® BSTF is a galvanised steel wire mesh for the installation of SPETEC® BST300.

BENEFITS

- Easy to install
- Good fixation of the SPETEC® BST300 , especially in vertical and over-head position

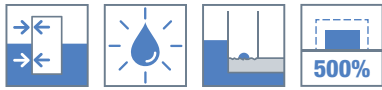
FIELD OF APPLICATION

For the fixation of water swellable sealing strips in concrete construction joints or reinforced concrete construction.



SPETEC® SST500

HYDROPHILIC SYNTHETIC WATERPROOFING STRIP FOR SEALING JOINTS



DESCRIPTION

SPETEC® SST500 is a black hydrophilic synthetic waterproofing strip of 20 x 10 mm and is available in lengths of 10 meter. It is simply fastened onto an existing joint. In contact with water and in confined conditions the strip will swell and stop the water infiltration. SPETEC® SST500 remains consistent in its performance throughout its life cycle and the flexibility allows it to fill voids and cracks in the immediate surrounding area.

BENEFITS

- Ecologically friendly
- Good impact resistance
- Permanently active system "wet/dry cycles"
- Easy to install, no special tools required
- Swells more than 500% when in contact with water
- Will not sag when correctly placed
- Due to its flexibility and high swelling capacity, SPETEC® SST500 can absorb movements in the construction. (Attention, this strip is not suitable for waterproofing expansion joints.)
- Good chemical resistance

FIELD OF APPLICATION

SPETEC® SST500 is used in:

- Construction joints in concrete
- Cold joints between concrete precast elements
- Pipe penetrations through concrete
- Joints between prefabricated pipe elements
- Joints between pre-casted concrete elements like water tanks and manholes
- Joints between floor slabs/walls and secant pile walls/slurry walls/ sheet piles...
- Sealing vertical and horizontal construction joints
- Sealing cold joints between concrete tunnel elements



SPETEC® PLUG

WATER-SWELLABLE PLUG TO SEAL OFF FORMWORK SPACERS



DESCRIPTION

Plug made of a white semi hard plastic with a tip of swellable polymers. The ribbed structure of the plug provides a first barrier against water ingress while the swelling of the tip when in contact with water will provide as secondary barrier.

BENEFITS

- Easy installation
- No special tools required
- No after-treatment required
- Good overall chemical resistance

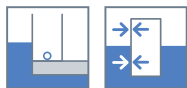
FIELD OF APPLICATION

All formwork spacers made out of plastic, PVC or metal with an internal diameter of 22 mm.



SPETEC® ITS

INJECTION TUBE SYSTEM FOR THE WATERPROOFING OF CONSTRUCTION AND COLD JOINTS.



DESCRIPTION

SPETEC® ITS is an injection tube system that allows injection of cold and construction joints via a pre-installed injection canal. SPETEC® ITS is placed in the joint during construction. It acts as a canal for the injection resin which will, when in contact with water, expand and seal the joint permanently.

BENEFITS

- Easy to install
- No special tools required.
- Complete system, delivered with all necessary accessories.
- The hose can be adjusted to the correct length on site.
- Due to the metal spiral core the hose keeps its inner diameter when bended.
- Low pressure injection possible.
- Can be injected preventatively or when leakages actually occur.
- After injection the joint is permanently sealed.
- Injection is done continuously over the porous surface of the tube, not via points or slits resulting in a more even distribution of the resin in the joint.
- No leak, no injection necessary.
- There is no interruption of the construction activities when SPETEC® ITS is installed.
- Can be combined with other preventative waterproofing systems like swelling bars and PVC water stops.

FIELD OF APPLICATION

- SPETEC® ITS is installed in construction joints in concrete, pipe penetrations and voids between secant piles walls and slabs, ...
- Joints between old cured concrete and fresh concrete to be poured.

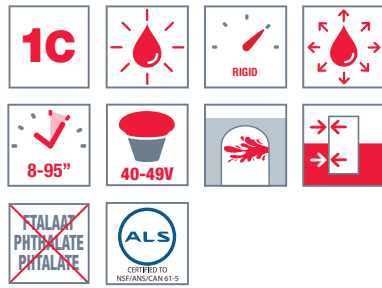




REMEDIAL WATERPROOFING

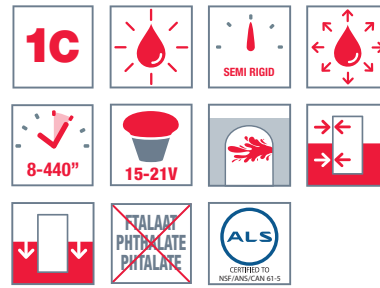
SPETEC® STOP HF300 (HIGHFOAMER)

FAST REACTING RIGID INJECTION RESIN WITH HIGH EXPANSION (HIGHFOAMER) FOR SEALING LARGE FLOW HIGH PRESSURE WATER LEAKS AND FOR FILLING GAPS AND VOIDS



SPETEC® STOP H100

SEMI RIGID INJECTION RESIN FOR SEALING LEAKING CRACKS AND JOINTS



DESCRIPTION

1 component, closed cell, hydrophobic, water reactive, phthalate free, low viscosity polyurethane injection resin for cut-off of large water leaks and void filling.

In contact with water the SPETEC® STOP HF300 (Highfoamer) will react fast and expand drastically.

BENEFITS

- 1 component system
- Different reaction times are possible by adjusting the percentage of SPETEC® Gen Acc accelerator. To get an even faster reaction, there is also a SPETEC® Gen Acc Fast accelerator available
- Cured polyurethane is rigid and exhibits high strength and good chemical resistance
- Cured polyurethane is harmless for the environment and resistant to biological attack

FIELD OF APPLICATION

- Water cut-off of large flow and high pressure water leaks
- Sealing foundations and sludge walls, sheet piles, secant pile walls
- Stabilisation and water cut-off of large cracks, voids and gravel layers
- Pre and post injections in mines, tunnels, pipe jacking, drill & blast and TBM applications
- Injections in combination with cement-based grout
- Crack and gravel nests injections in concrete structures
- Water cut-off of sewer water leaks and sewer stabilisation
- Injection of man holes

DESCRIPTION

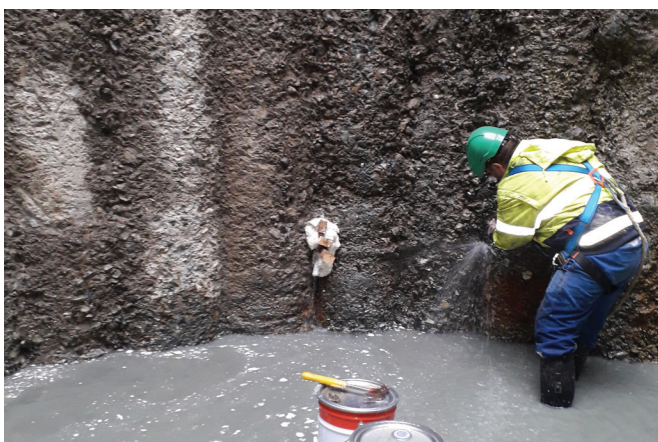
1 component, closed cell, hydrophobic, water reactive, phthalate free, low viscosity polyurethane injection resin for stabilisation and water cut-off of large water leaks. In contact with water the SPETEC® STOP H100 will expand and set as a permanent water seal inside the crack or joint.

BENEFITS

- 1 component system
- Different reaction times are possible by adjusting the percentage of SPETEC® Gen Acc (accelerator). To get an even faster reaction, there is also a SPETEC® Gen Acc Fast accelerator available
- Cured polyurethane exhibits high strength and good chemical resistance
- Cured polyurethane is harmless for the environment and resistant to biological attack

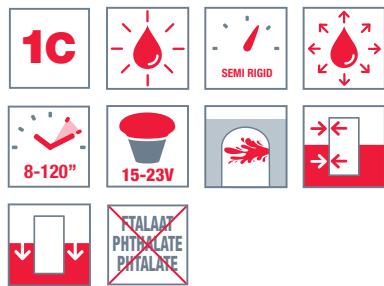
FIELD OF APPLICATION

- Water cut-off of large flow and high pressure water leaks
- Water cut-off of water leaks in foundations such as diaphragm walls, piling sheets and secant piles
- Stabilisation and water cut-off of large cracks, voids and gravel layers.
- Pre and post injections in mines, tunnels, pipe jacking, drill & blast and TBM applications
- Injections in combination with cement-based grout, "combi-grouting".
- Soil stabilisation and anchors in porous geology
- Water cut-off of sewer water leaks and sewer stabilisation
- Probe Grouting for below grade pipes
- Manhole Injections



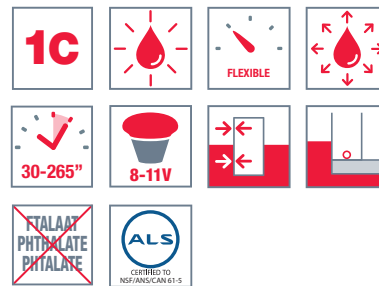
SPETEC® STOP H50

SEMI RIGID HYDROPHOBIC INJECTION RESIN FOR SEALING LEAKING CRACKS AND JOINTS



SPETEC® SEAL F400

LOW VISCIOUS, FLEXIBLE INJECTION RESIN FOR SEALING LEAKING JOINTS AND CRACKS



DESCRIPTION

1 component, closed cell, hydrophobic, water reactive, phthalate free, low viscosity polyurethane injection resin for stabilisation and water cut-off of large to small water leaks. In contact with water the SPETEC® STOP H50 will expand and set as a permanent water seal inside the crack or joint. SPETEC® STOP H50 is ideal for sealing hairline cracks and fissures from 0.2 mm. Due to its ultra low viscosity and adjustable reaction time, SPETEC® STOP H50 is perfectly suitable for leaking fine cracks and fissures in thick to very thick concrete walls and floors. The cured product is semi-rigid.

BENEFITS

- 1 component
- Different reaction times are possible by adjusting the percentage of SPETEC® Gen Acc (accelerator)
- Cured polyurethane is harmless for the environment
- Micro-organisms resistant

FIELD OF APPLICATION

- Water cut-off of large flow and high hydrostatic pressure water leaks
- Sealing fine to very fine leaking cracks and fissures in foundations such as diaphragm walls, piling sheets and secant piles
- Stabilization and sealing of smaller cracks, fine water-bearing cracks in concrete walls and floors
- Pre and post injections in mines, tunnels, pipe jacking, drill & blast and TBM applications
- Injections in combination with cement-based grout, "combi-grouting"
- Crack and gravel layer injections in concrete structures
- Soil stabilisation and anchors in porous geology
- Water cut-off of sewer water leaks and sewer stabilisation
- Manhole Injections

DESCRIPTION

1 component, closed cell, hydrophobic, water reactive, phthalate free, low viscosity polyurethane injection resin for stabilisation and water cut-off of large water leaks.

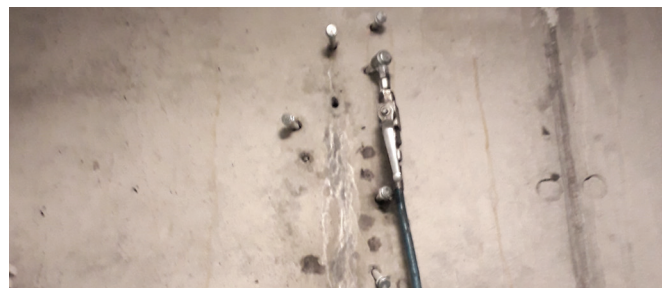
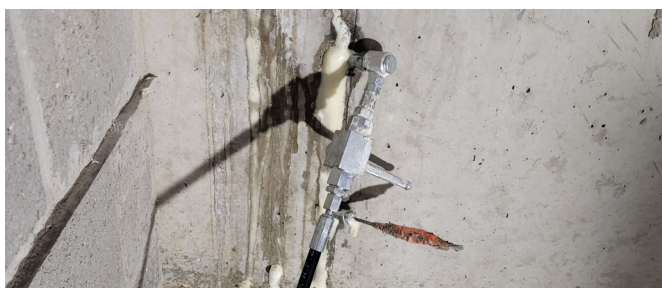
In contact with water the SPETEC® SEAL F400 will expand and set as a permanent flexible water seal inside the crack or joint.

BENEFITS

- 1 component
- Different reaction times are possible by adjusting the percentage of SPETEC® Gen Acc. To get an even faster reaction, there is also a SPETEC® Gen Acc Fast accelerator available
- Cured polyurethane is flexible, shrink-free and exhibits good chemical resistance (contact our Technical Service for more information)
- Cured polyurethane is harmless for the environment and resistant to biological attacks

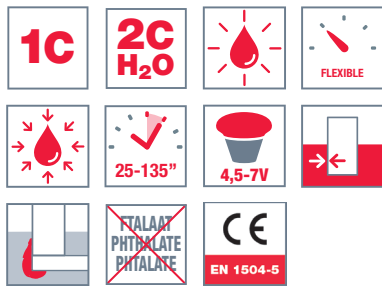
FIELD OF APPLICATION

- Shut off water leaks in concrete, brickwork and sewers where movement and settlement may occur
- Injecting very fine joints, cracks and microcracks < 0.5 mm
- Water cut-off of water leaks in foundations such as diaphragm walls, piling sheets and secant piles
- Sealing water-carrying cracks and joints in tunnel segments
- Curtain grouting behind tunnel, concrete, brickwork and sewer walls
- Injection of water cut-off membranes and liners in tunnels
- Injection of preventively placed injection tubes



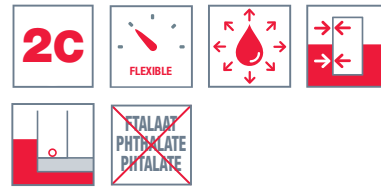
SPETEC® SEAL GT350

LOW VISCOSITY, FLEXIBLE, HYDROPHILIC INJECTION RESIN FOR SEALING LEAKING CRACKS AND FOR SCREEN INJECTIONS



SPETEC® SEAL 2C100

VERY LOW VISCOUS, 2-COMPONENT, FLEXIBLE INJECTION RESIN FOR SEALING OR FILLING CRACKS, JOINTS AND VOIDS



DESCRIPTION

MDI based hydrophilic, 1 component, low viscosity, flexible, phthalate free, polyurethane injection resin for waterproofing. In contact with water the SPETEC® SEAL GT350 will expand and set as a permanent water seal inside the crack or joint. Addition of water as additional component for reaction is possible.

BENEFITS

- 1 component hydrophilic PU resin
- Additional waterproofing due to post-expansion
- Fast reaction with immediate increase of viscosity without the need for an accelerator
- Reaction can be set faster with SPETEC® Gen Acc
- Can be injected as 1 component or 2 component in combination with water, maximum amount of water = 200%.
- Foam factor 7V
- Cured polyurethane is highly flexible, ideally suited for structures where a high degree of settlement and movement can occur
- Cured polyurethane is harmless for the environment and resistant to biological attacks

FIELD OF APPLICATION

- Cut - off water leaks in concrete, brickwork and sewers where movement and settlement may occur
- Water cut-off of water leaks in foundations such as diaphragm walls, piling sheets and secant piles
- Sealing water-carrying cracks and joints in tunnel segments
- Curtain grouting behind tunnel, concrete, brickwork and sewer walls
- Injection of failing membranes and liners in tunnels and buildings

DESCRIPTION

2 component, hydrophobic, phthalate free, very low viscosity polyurethane injection resin.

BENEFITS

- High reactive 2 component
- Very low viscosity allows injection in microfine-cracks or small voids.
- Cured polyurethane is flexible, shrink-free and exhibits good chemical resistance (contact our Technical Service for more information).
- Resilient (returns completely to original shape when crushed)
- No expansion pressure
- Watertight
- Easy application with 1-component pump
- Cured polyurethane is harmless for the environment and resistant to biological attacks.

FIELD OF APPLICATION

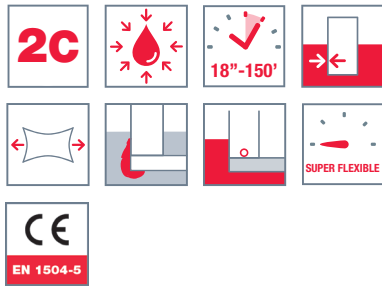
Injection for ductile (elastic, flexible) sealing and filling of cracks, joints and voids in dry, moisture and wet conditions for building construction, underground and civil engineering, such as:

- Concrete, brickwork and sewers where movement and settlement may occur.
- Foundations such as diaphragm walls, piling sheets and secant piles.
- Cracks and joints in tunnel segments.
- Curtain grouting behind tunnel, concrete, brickwork and sewer walls.
- Joints and cracks in water reservoirs and tanks.
- Injection of voids between concrete and membranes or liners in tunnels and sewers.
- Injection of preventively placed injection tubes or hoses.



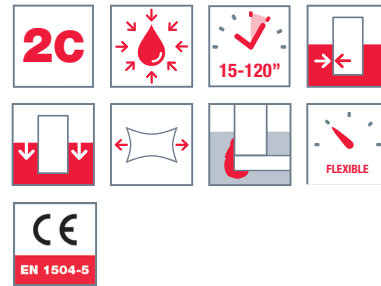
SPETEC® SEAL AG100

ULTRA LOW VISCOSITY ACRYLIC, SUPER FLEXIBLE INJECTION RESIN MAINLY APPLIED FOR WATERPROOFING CRACKS, JOINTS AND FOR SCREEN INJECTIONS



SPETEC® SEAL AG200

ULTRA LOW VISCOSITY ACRYLIC, FLEXIBLE INJECTION RESIN MAINLY APPLIED FOR SOIL CONDITIONING AND SCREEN INJECTIONS



DESCRIPTION

SPETEC® SEAL AG100 is a resin, based on Acrylic monomers. After injection, the resin gels in a few seconds to a few minutes based on the amount of activator/initiator added just before use. The final injected product is a soft, super flexible and tacky crosslinked gel that provides a waterproofing course.

BENEFITS

- Super flexible
- Non-toxic for the environment
- Not flammable
- No acrylamide
- Very low viscosity.
- Durable in wet and dry conditions

FIELD OF APPLICATION

MAIN FIELDS OF APPLICATION

WITH WATER OR SPETEC® Reinforcing Agent

- Screen injections behind existing structures.
- Waterproofing - Low flow leaks:
Underground structures in concrete and masonry (ex. basements, underground parking spaces, ...)
- Cracks in concrete and rock formations.
- Filling and waterproofing gravel nests in concrete
- Preventive waterproofing of structures with constant water pressure (If treated during the dry period)
- Injection into very fine leaking cracks or joints
- Injection of re-injectable injection hoses

ONLY WITH SPETEC® Reinforcing Agent

- Waterproofing voids and joints (max 2 - 3 mm) of tunnel elements
- Below grade expansion joints. (Below level of the groundwater table)

OTHER FIELDS OF APPLCATION

WITH WATER OR SPETEC® Reinforcing Agent

- Sewer joint repair (only manual method)

ONLY WITH WATER

- Filling hollow spaces and gaps behind structures (If the soil around the gap is to loose, product flows into the soil)

DESCRIPTION

SPETEC® SEAL AG200 is a resin, based on Acrylic monomers. After injection, the resin gels in a few seconds to a few minutes based on the amount of activator/initiator added just before use. The final injected product is a soft, flexible and slightly sticky crosslinked gel which becomes more jelly the more water is added to the base acryl resin.

BENEFITS

- Non-toxic for the environment
- Not flammable
- No acrylamide
- Very low viscosity
- Durable in wet and dry conditions

FIELD OF APPLICATION

MAIN FIELDS OF APPLICATION

- Soil conditioning, -stabilisation, -coagulation
- Screen injections behind existing structures
- Filling hollow spaces and gaps behind structures (Pay attention: If the soil around the gap is to loose, product flows into the soil)

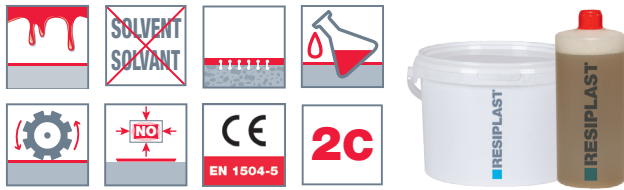
OTHER FIELDS OF APPLICATIONS

- Filling and waterproofing gravel nests in concrete
- Waterproofing of underground structures in concrete and masonry (ex. basements, underground parking spaces, ...)
- Waterproofing cracks in rock formations
- Injection of re-injectable injection hoses
- Below grade expansion joints



EPICOL INJ LV

LOW-VISCOSITY EPOXY RESIN FOR CONCRETE INJECTION



DESCRIPTION

EPICOL INJ LV is a 2 component, solvent-free, (ultra) low-viscosity epoxy resin for structural bonding and monolithic sealing of voids and (micro) cracks in dry or humid concrete. Sealing purposes can be both to prevent contaminants penetration as waterproofing. EPICOL INJ LV is also applicable for sealing and repairing cracks contaminated with oils and/or greases.

BENEFITS

- (Ultra) low-viscosity with deep penetration into micro cracks
- Solvent-free
- Long processing time or pot-life
- Simple mixing ratio
- Deep penetration in micro cracks
- Excellent adhesion to concrete, also for humid substrate
- Good chemical resistance
- Excellent mechanical strength
- Minimal shrinkage

FIELD OF APPLICATION

For structural repair of:
Residential, industrial and civil structures or structural elements, such as floors, walls, beams, columns, bridge and parking decks, and water retaining structures.
EPICOL INJ LV can be used as glue for bonding and anchoring. The bonding of steel sheet lining / cladding for concrete is possible by low pressure injection.





GEOTECH SOLUTIONS

AP FILL 420

TWO COMPONENT, HIGHLY EXPANSIVE POLYURETHANE FOAM FOR FILLING VOIDS



AP LIFT 430

TWO COMPONENT, STRUCTURAL POLYURETHANE FOAM FOR LIGHTWEIGHT AND MEDIUM WEIGHT STRUCTURES



DESCRIPTION

AP FILL 420 is a two component, high expansion, hydro insensitive polyurethane foam. Unconfined density is approximately 32 kg/m³.

BENEFITS

- 90% of full strength in 15 minutes.
- High expansion rate of 35x.
- Works in wet environments - displaces water.
- Bonds with soil and concrete.
- Closed cell.

FIELD OF APPLICATION

- Filling abandoned pipes, mine shafts, etc.
- Filling voids.
- Floatation foam.

DESCRIPTION

AP LIFT 430 is a two component, high strength, high density, hydro insensitive structural polyurethane foam. Unconfined density is approximately 48 kg/m³.

BENEFITS

- Great lifting force
- Fully cured and loadable within 30 min.
- Works in wet environments
 - Water and soil displacement properties
- Bonds with soil and concrete
- Closed cell
- Applicable in contact with drinking water

FIELD OF APPLICATION

- Stabilizing soil
- Lifting sunken or settled concrete slabs and light to medium-heavy structures
- Filling voids
- Filling abandoned pipes



AP LIFT 440

TWO COMPONENT, STRUCTURAL POLYURETHANE FOAM FOR HEAVY STRUCTURES



AP LIFT 475

TWO COMPONENT, STRUCTURAL POLYURETHANE FOAM FOR VERY HEAVY STRUCTURES



DESCRIPTION

AP LIFT 440 is a two component, high strength, high density, hydro insensitive structural polyurethane foam. Unconfined density is approximately 64 kg/m³.

BENEFITS

- High strength.
- Low viscosity.
- Works in wet environments - displaces water.
- Bonds with soil and concrete.
- Traffic ready in 15 minutes.
- Closed cell.

FIELD OF APPLICATION

- Stabilizing soil.
- Lifting concrete slabs.
- Filling voids.
- Filling abandoned pipes.
- Supplemental sinkhole remediation.

DESCRIPTION

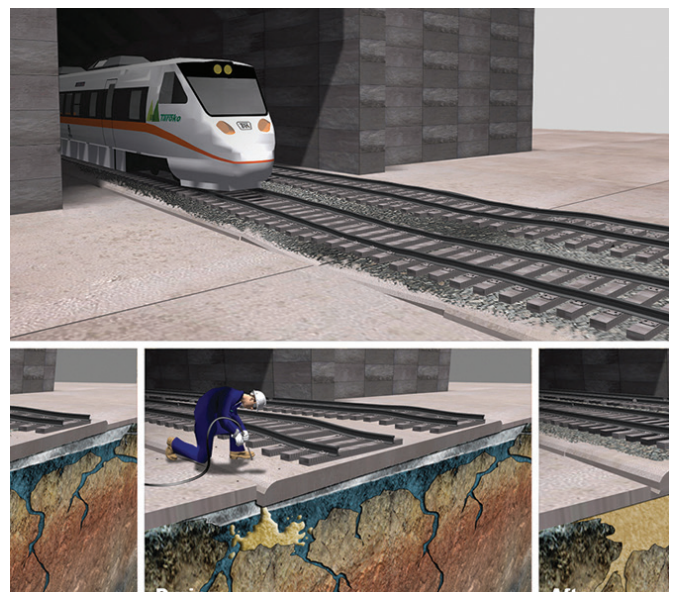
AP LIFT 475 is a two component, high strength, high density, hydro insensitive structural polyurethane foam. Unconfined density is approximately 76 kg/cubic meter. Also available in a slow version.

BENEFITS

- High strength.
- Low viscosity.
- Works in wet environments - displaces water.
- Bonds with soil and concrete.
- Traffic ready in 15 minutes.
- Closed cell.

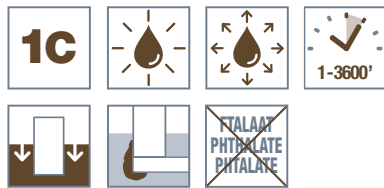
FIELD OF APPLICATION

- Stabilizing soil.
- Lifting concrete slabs.
- Filling voids.
- Supplemental sinkhole remediation



AP SOIL 600

MOISTURE ACTIVATED POLYURETHANE SOIL STABILIZATION RESIN



DESCRIPTION

AP SOIL 600 is a phthalate free, water reactive, hydrophobic, one-component low viscosity polyurethane injection resin designed for soil stabilisation.

BENEFITS

- One component
- Very low viscosity for good soil penetration.
- No catalyst required. Although different reaction times are possible by adding and adjusting the percentage of AP Geo Acc accelerator.
- Encapsulates and strengthens loose soil.
- Injections in compact soil layers up to coefficient 10^{-6} m/s are possible.
- Cured polyurethane chemically anchored with substrate exhibits high strength and good chemical resistance. (contact our Technical Service department for more information)
- Watertight.
- Phthalate free (more environmentally friendly).

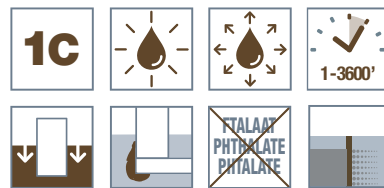
FIELD OF APPLICATION

- Permeation grouting.
- Loose sand, soil and gravel layer stabilisation.
- Pre- and post-injections in mines, tunnels, pipe jacking, drill & blast and TBM applications.
- Injections in combination with cement and micro fine cement.
- Anchoring and micropiles.
- Stabilisation of quay walls, floor slabs, roads, slopes and sewers.
- Curtain grouting
- Damming of chemically contaminated soil.
- Sinkhole remediation.



AP SOIL 600 PM

MOISTURE ACTIVATED POLYURETHANE SOIL STABILIZATION RESIN WITH WATER-PERMEABLE PROPERTIES



DESCRIPTION

AP SOIL 600 PM is a phthalate free, water reactive, hydrophobic, one-component low viscosity polyurethane injection resin designed for soil stabilisation with water permeability.

BENEFITS

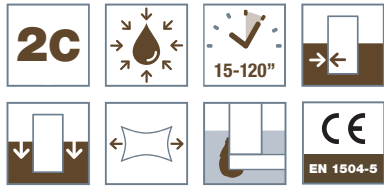
- One component
- Very low viscosity for good soil penetration.
- No catalyst required. Although different reaction times are possible by adding and adjusting the percentage of AP Geo Acc accelerator.
- Encapsulates and strengthens loose soil.
- Injections in compact soil layers up to coefficient 10^{-6} m/s are possible.
- Cured polyurethane chemically anchored with substrate exhibits high strength and good chemical resistance. (contact our Technical Service department for more information)
- Watertight, with limited water permeability.
- Phthalate free (more environmentally friendly).

FIELD OF APPLICATION

- Permeation grouting.
- Loose sand, soil and gravel layer stabilisation.
- Pre- and post-injections in mines, tunnels, pipe jacking, drill & blast and TBM applications.
- Anchoring and micro-piles.
- Stabilisation of floor slabs, roads, slopes and sewers.
- Stabilisation of soils adjacent to quay walls where water permeability is required to keep underlying wooden pile foundations from rotting, at full reclamation
- Curtain grouting
- Damming of chemically contaminated soil.
- Sinkhole remediation.



SPETEC® SEAL AG 200



DESCRIPTION

SPETEC® SEAL AG 200 is a resin, based on Acrylic monomers. After injection, the resin gels in a few seconds to a few minutes based on the amount of activator/initiator added just before use. The final injected oproduct is a soft and slightly sticky, flexible crosslinked gel which becomes more jelly the more water is added to the base acryl resin.

BENEFITS

- Non-toxic for the environment
- Not flammable
- No acrylamide
- Very low viscosity
- Durable in wet and dry conditions

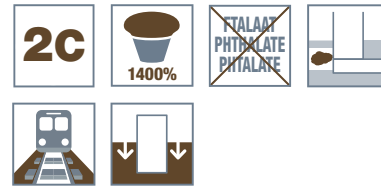
FIELD OF APPLICATION

- Filling and waterproofing gravel nests in concrete
- Waterproofing of underground structures in concrete and masonry (ex. basements, underground parking spaces, ...)
- Waterproofing cracks in rock formations
- Injection of re-injectable injection hoses
- Below grade expansion joints
- Screen injections behind existing structures



AP STAB N180

2 COMPONENT POLYURETHANE INJECTION RESIN FOR STABILISATION APPLICATIONS AND VOID FILLING.



DESCRIPTION

Medium viscous, 2 components, solvent and phthalate free, expansive, polyurethane resin developed for stabilizing railway ballast, for improving and stabilisation of various loose types of soil and filling voids.

BENEFITS

- Excellent adhesion to all substrate types
- Hard foam with outstanding structure reinforcing properties
- High tensile strength
- Expansion up to 1400%
- AP STAB N180 can be pumped and poured
- Cured polyurethane is shrink-free and exhibits good chemical resistance (contact our Technical Service department for more information)
- Cured polyurethane is functional between -40 °C and +100 °C
- Cured polyurethane is harmless for the environment and resistant to biological attacks.

FIELD OF APPLICATION

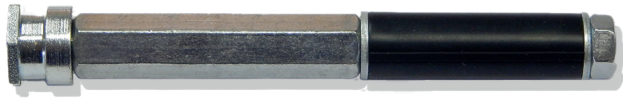
- Railway ballast stabilisation (during excavation or tunneling of railway lines)
- Dike and slope stabilisation
- Securing anchors and foundation piles
- Restoration of load-bearing capacity below floors
- Foundation stabilisation
- Filling voids





ACCESSORIES

STEEL PACKER PAN HEAD NIPPLE



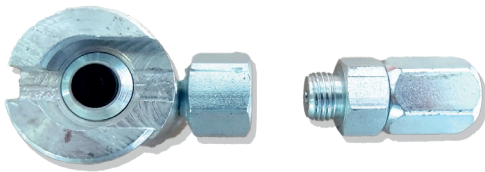
MEASUREMENT	QUANTITY
10 x 110 mm	1 box of 100 pieces
13 x 110 mm	1 box of 100 pieces
Other sizes on request	

STEEL PACKER ROUND HEAD



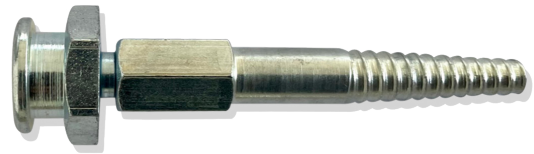
MEASUREMENT	QUANTITY
10 x 110 mm	1 box of 100 pieces
13 x 110 mm	1 box of 100 pieces
Other sizes on request	

SLIDING + ROTATING COUPLER



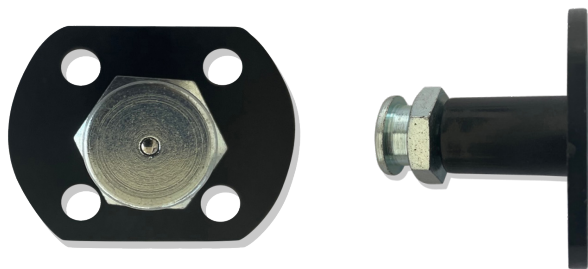
QUANTITY
2 bags of 5 pieces

CONICAL PACKER



MEASUREMENT	QUANTITY
10 x 70 mm	1 bag of 5 pieces

ADHESIVE PACKER



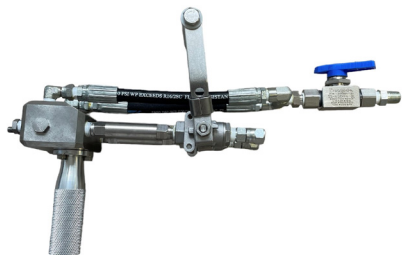
QUANTITY
1 box of 100 pieces

PAIL HEATER



QUANTITY
Per piece

MIXMASTER PRO GUN AND ACCESSORIES



QUANTITY
Per piece

AP FLUSH 121

REUSABLE, BIODEGRADABLE PUMP FLUSH



DESCRIPTION

AP FLUSH 121 is a high performance pump flush that is friendly to the environment and does an excellent job flushing out injection pumps.

BENEFITS

- Optimal viscosity for flushing pumps
- Prevents urethane from curing inside of the pumps
- Low toxicity
- Reusable
- Biodegradable

FIELD OF APPLICATION

- Flushing injection resin out of pumping equipment.

SPETEC® PUMP CLEANER

ECOLOGICAL WASHING AGENT FOR POLYURETHANE INJECTION EQUIPMENT



DESCRIPTION

SPETEC® PUMP CLEANER is a non-flammable solvent mixture for cleaning polyurethane grout pumps and equipment. SPETEC® PUMP CLEANER is composed of a mixture of organic solvents with high dissolving properties for liquid polyurethane products.

BENEFITS

- Non-flammable
- Contains no water
- Ecological Friendly

FIELD OF APPLICATION

- Flushing out and cleaning pumps and lines used to inject polyurethane grouts.
- Cleaning of all tools that come in contact with Polyurethane resins.

AP FLUSH 125

IMPINGEMENT GUN FLUSH AND STAIN PREVENTER



DESCRIPTION

AP FLUSH 125 is a water based gun flush specifically used for flushing out the MixMaster impingement gun. Also used to protect concrete from resin stains.

BENEFITS

- Environmentally safe
- Biodegradable
- Zero toxicity

FIELD OF APPLICATION

- Flushing polymers from the MixMaster impingement gun.
- Preventing foam from staining/bonding to concrete and other surfaces.

LEGENDE ICONEN



1 component



2 component



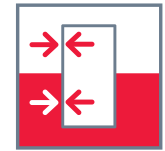
2 component
H2O



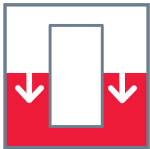
above ground



underground



underground and
above ground



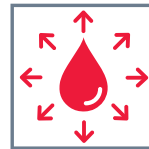
ground injection



water-activated



hydrophilic



hydrophobe



chemical
resistance



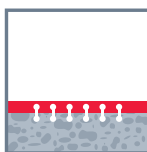
no water



low viscosity



high mechanical
strength



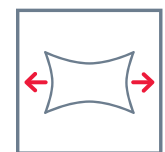
concrete
adhesion



solventfree



phthalate free



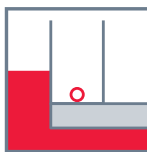
elastic



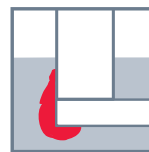
hollow space



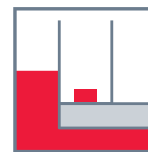
waterleakage



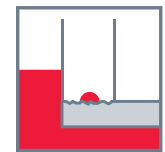
tube ITS



crack injection



strips



WT400



flexible



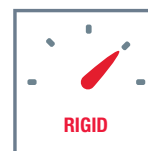
super flexible



half hard



half hard



hard



super hard



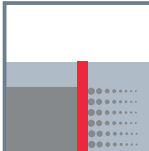
time interval
8-95''



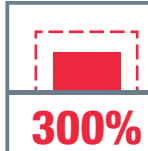
volume expansion
15-21V



railway



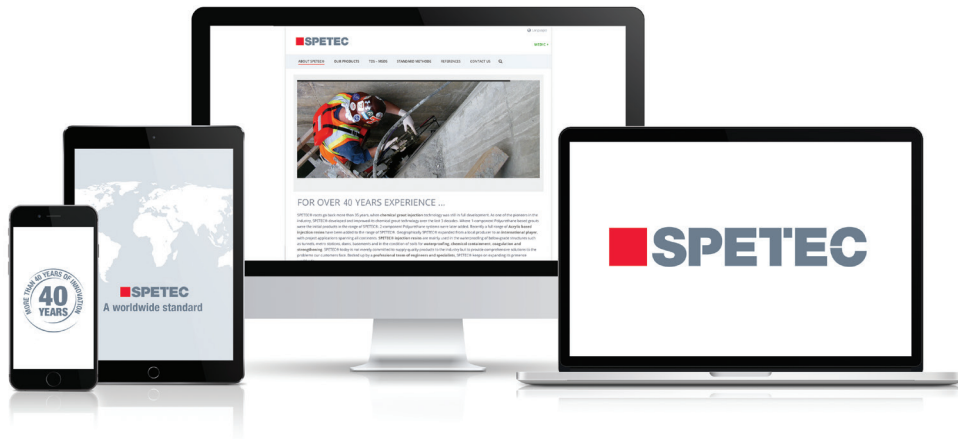
Spetec
water-permeable



expansion 300 %

SPETEC® ONLINE

ALWAYS AT HAND. ON ANY DEVICE AND UP-TO-DATE IN MULTIPLE LANGUAGES.



- TDS Technical data sheets
- MSDS Safety sheets
- Product Catalogue

Find your product by product group, feature and / or application and references:

www.resiplast.be

SPETEC® can fully accompany your project and inform you which are the right choices to optimize your project.

SPETEC® REPRESENTATIVE

Your everyday contact

SPETEC® ACADEMY

Training center Wommelgem
Theory and Practice

SPETEC® TECHNICAL SUPPORT

With the customer and on the jobsite

All information in this catalogue is provided in good faith, but without any guarantees. The application, use and processing of the products are beyond our control and are, as such, the sole responsibility of the user/processor. In the event that KorAC NV is still held liable for damages, then the claim will still be limited to the value of the goods delivered. We always aim to deliver consistently high quality goods. This version replaces all previous versions. Release date: 8 April 2024 12:22 pm

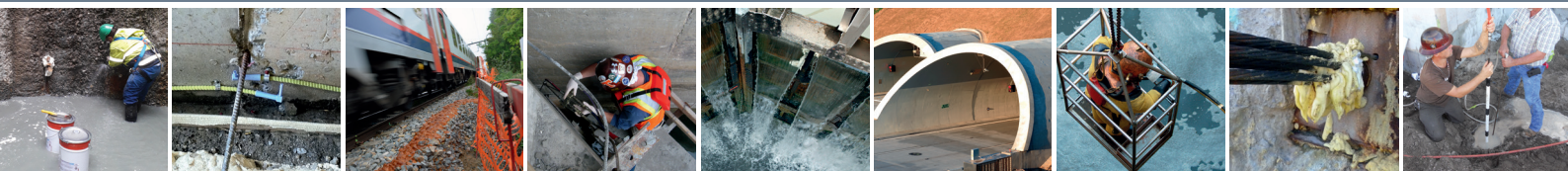
YOUR GUARANTEE AND TRUST



FM 78518



EMS 716699



©copyright photography & illustrations: pogonici, lesik aleksandr, rawpixel, yarruta, vanatchanan, igor dolgov, cseh ioan, wavebreak media ltd, kzenon, vadim ginzburg, konstanttin

RESIPLAST NV

Gulkenrodestraat 3
B-2160 Wommelgem
Belgium

Tel: +32 (0) 3 320 02 11
Fax: +32 (0) 3 322 63 80
info@resiplast.be
www.resiplast.be

SPETEC IS EEN PRODUCT MERK VAN RESIPLAST NV

KORAC NV AND RESIPLAST NV ARE PART OF KORAMIC CHEMICALS