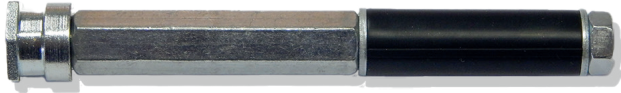


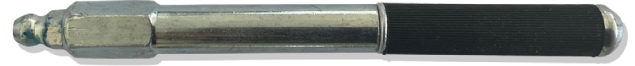
SPETEC® PACKERS & ACCESSORIES

STEEL PACKER PAN HEAD NIPPLE



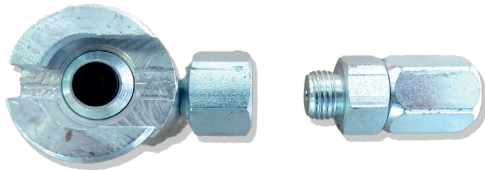
MEASUREMENT	QUANTITY
10 x 110 mm	1 box of 100 pieces
13 x 110 mm	1 box of 100 pieces
Other sizes on request	

STEEL PACKER ROUND HEAD



MEASUREMENT	QUANTITY
10 x 110 mm	1 box of 100 pieces
13 x 110 mm	1 box of 100 pieces
Other sizes on request	

SLIDING + ROTATING COUPLER



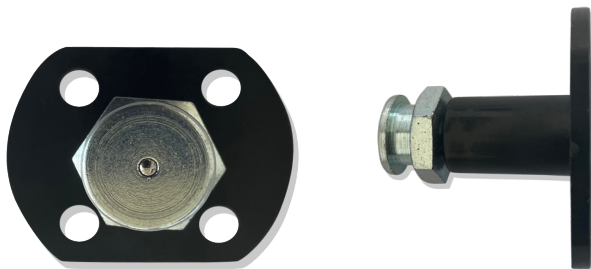
HOEVEELHEID
2 bags of 5 pieces

CONICAL PACKER



MEASUREMENT	QUANTITY
10 x 70 mm	1 bag of 5 pieces

ADHESIVE PACKER



QUANTITY
1 box of 100 pieces

The above information is provided in good faith, but without any guarantees. The application, use and processing of the products are beyond our control and are, as such, the sole responsibility of the user/processor. In the event that KorAC NV is still held liable for damages, then the claim will still be limited to the value of the goods delivered. We always aim to deliver consistently high quality goods. All values on this technical sheet are average values that result from tests carried out under laboratory conditions (20 °C and 50% RH). Values that are measured on the construction site may show a slight deviation since the environmental conditions, the application, and the way of processing our products are beyond our control. Do not add any products other than those indicated on the technical documentation. This version replaces all previous versions. Version 2.0 Date: 5 April 2024 8:54 am